




International Affairs Office

UTP ENGINEERING SHORT COURSES



Welcome to

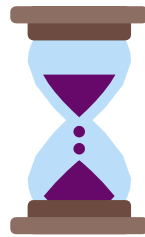
UTP ENGINEERING SHORT COURSES

Basics of the program



Date

On demand,
preferably Jan, Feb,
July or August



Duration

15 - 20 days
stay in Panama



Includes

- Participation certificate
- Use of Microsoft Teams platform or WiFi on site
- Social program



Course Topics / Options

- Panama - International Logistics Hub
- Panama, the route - Crossroad, Railroad, Panama Canal
- Forest Engineering in the Central American Tropic
- Panamanian Orchids - Endemism and Distribution
- Green Energies in Panama: How can they help with technological growth
- Understanding CO2 emissions in Panama, a carbon negative country

For more information visit : mobility.utp.ac.pa/utp-engineering-short-courses/



UTP ENGINEERING SHORT COURSES

PROPOSED SCHEDULES

Option 1 - 15 days schedule

Day	Exercise	Destination	Observations
Sunday	Arrival in Panama and accommodation at the hotel	Chosen Hotel	Private transportation from the airport to the hotel has a cost of B/.20.00 per student
Monday	Opening Course in the graduate building	UTP - Course #1 9 a.m. - 12 p.m.	Students arrive on their own at CVLS
Tuesday	Course in the graduate building	UTP - Course #1 9 a.m. - 12 p.m.	Students arrive on their own at CVLS
	Academic tour	Academic tour #1 2 p.m. - 5 p.m. Options (choose only one): <ul style="list-style-type: none"> Panama Pacific facilities Panama Ports City of knowledge 	By UTP transport (free) They will be accompanied by a UTP teacher and DRI UTP staff
Wednesday	Course in the graduate building	UTP - Course #1 9 a.m. - 1 p.m.	Students arrive on their own at CVLS
Thursday	Course in the graduate building	UTP - Course #2 9 a.m. - 12 p.m.	Students arrive on their own at CVLS
Friday	Course in the graduate building	UTP - Course #2 9 a.m. - 12 p.m.	Students arrive on their own at CVLS
	Cultural Activities in the graduate building	Cultural Activities #1 2 p.m. - 4 p.m.	Students arrive on their own at CVLS






UTP ENGINEERING SHORT COURSES

Saturday	FREE FOR RECREATIONAL ACTIVITIES		
Sunday	FREE FOR RECREATIONAL ACTIVITIES		
Monday	Course in the graduate building	UTP - Course #2 9 a.m. – 1 p.m.	Students arrive on their own at CVLS
Tuesday	Course in the graduate building	UTP – Course #3 9 a.m. – 12 p.m.	Students arrive on their own at CVLS
	Academic tour	Academic tour #2 2 p.m. - 5 p.m. Panamá Canal (Miraflores Visitor Center) By private transport leaving the UTP Ask for information	Tour includes tickets to the Panama Canal (Miraflores visitor center) and bottled water. B/.65.00 per student
Wednesday	Course in the graduate building	UTP - Course #3 9 a.m. – 12 p.m.	Students arrive on their own at CVLS
Thursday	Course in the graduate building	UTP - Course #3 9 a.m. – 1 p.m.	Students arrive on their own at CVLS
Friday	Closing, delivery of certificates and cultural activities	Closing ceremony and cultural activities 9 a.m. – 12 p.m.	Students arrive on their own at CVLS
Saturday	FREE FOR RECREATIONAL ACTIVITIES		
Sunday	Preparations to get back home.	At Hotel	Private transportation from the hotel to the airport has a cost of B/.20.00 per student
	RETURN FLIGHT		




UTP ENGINEERING SHORT COURSES

Option 2 - 20 days schedule

Day	Exercise	Destination	Observations
Sunday	Arrival in Panama and accommodation at the hotel	Chosen Hotel	Private transportation from the airport to the hotel has a cost of B/.20.00 per student
Monday	Opening Course in the graduate building	UTP - Course #1 9 a.m. - 12 p.m.	Students arrive on their own at CVLS
Tuesday	Course in the graduate building	UTP - Course #1 9 a.m. - 12 p.m.	Students arrive on their own at CVLS
Wednesday	Course in the graduate building	UTP - Course #1 9 a.m. - 1 p.m.	Students arrive on their own at CVLS
Thursday	Academic Tour	Academic tour #1 8:30 a.m. – 12:30 p.m. Options (choose only one): <ul style="list-style-type: none">  Panama Pacific facilities  Panama Ports  City of knowledge By UTP transport	By UTP transport (free) They will be accompanied by a UTP teacher and DRI UTP staff
Friday	Cultural Activities in the graduate building	Cultural Activities #1 (up for rescheduling) 2 p.m. – 4 p.m.	Students arrive on their own at CVLS
Saturday	FREE FOR RECREATIONAL ACTIVITIES		
Sunday	FREE FOR RECREATIONAL ACTIVITIES		
Monday	Course in the graduate building	UTP - Course #2 9 a.m. – 1 p.m.	Students arrive on their own at CVLS
Tuesday	Course in the graduate building	UTP – Course #2 9 a.m. – 12 p.m.	Students arrive on their own at CVLS



UTP ENGINEERING SHORT COURSES

Wednesday	Course in the graduate building	UTP - Course #2 9 a.m. – 1 p.m.	Students arrive on their own at CVLS
Thursday	Academic tour	Academic tour #2 2 p.m. - 5 p.m.  Panama Canal (Miraflores Visitor Center) By private transport leaving the UTP Ask for information	Tour includes tickets to the Panama Canal (Miraflores visitor center) and bottled water. B/.65.00 per student
Friday	Cultural Activities in the graduate building	Cultural Activities #2 (up for rescheduling) 2 p.m. – 4 p.m.	Students arrive on their own at CVLS
Saturday	FREE FOR RECREATIONAL ACTIVITIES		
Sunday	FREE FOR RECREATIONAL ACTIVITIES		
Monday	Opening Course in the graduate building	UTP - Course #3 9 a.m. - 12 p.m.	Students arrive on their own at CVLS
Tuesday	Course in the graduate building	UTP - Course #3 9 a.m. - 12 p.m.	Students arrive on their own at CVLS
Wednesday	Course in the graduate building	UTP - Course #3 9 a.m. - 1 p.m.	Students arrive on their own at CVLS
Thursday	Closing, delivery of certificates and cultural activities	Closing ceremony and cultural activities 9 a.m. – 12 p.m.	Students arrive on their own at CVLS
Friday	Preparations to get back home.	At Hotel	Private transportation from the hotel to the airport has a cost of B/.20.00 per student
	RETURN FLIGHT		



UTP ENGINEERING SHORT COURSES

ACADEMIC PART COST BY STUDENT: B/.750.00 IF ON TEAMS / B/.1,000.00 IF ON SITE

(Includes talks, use of facilities, certificate, Wi-Fi access and snack)

PRIVATE TRANSPORTATION COST BY STUDENT B/.105.00

(Includes transfer airport-hotel-airport and visit to tourist centers)

APPROXIMATE COST OF SUGGESTED ACCOMMODATION BETWEEN B/.250.00 – B/.350.00 FOR OPTION 1 AND BETWEEN B/. 333.00 – B/. 466.00 FOR OPTON 2

Suggestions strategically located near Panama City and with access to public transportation points. They include Wi-Fi access and amenities.

Hotel Options:

Hotel	Type of room	Price for Option 1 (total for 15 nights)	Price for Option 2 (total for 20 nights)
Hotel Ojos del Río	Triple room (3 single beds)	B/.1,035.00 (with breakfast) *B/.345.00 per student	B/.1,380.00 (with breakfast) *B/.460.00 per student
Hotel Marbella	Double room with extra bed	B/.750.00 (without breakfast) *B/.250.00 per student	B/.1,000.00 (without breakfast) *B/.333.33 per student
Victoria Hotel and Suites Panama	Deluxe double room with 3 beds	B/.1042.50 (without breakfast) *B/.347.50 per student	B/.1,390.00 (without breakfast) *B/.463.33 per student
Complejo de Hospedaje Ciudad del Saber	Triple room (3 single beds)	B/.1050.00 (without breakfast) *B/.350.00 per student	B/.1,400.00 (without breakfast) *B/.466.66 per student



UTP ENGINEERING SHORT COURSES

Courses Available

Course Topic: Panama – International Logistics Hub:

Prof. Zoila de Castillo

Describe the management and design of the supply chain. International transport: modes, infrastructure, and documentation. Distribution channels, facilities and international storage elements: privileged customs areas. Packaging elements, integrated logistics, centralized and decentralized administration.

Course Topic: Panama, The Route – Crossroad, Railroad, Panama Canal

Prof. Orlando Acosta Patiño

The course describes the history of Panama as a route from “Camino de Cruces” at the time of the Spanish conquest, the railway during the time of the California Gold Rush to the construction of the Panama Canal.

Course Topic: Forest Engineering in Central America Tropic:

Prof. Alexis Baúles

The course offers an introduction in response to the current challenges and demands, derived from new national and international policies, related to sustainable forest management, natural forest conservation, declining deforestation and forest degradation.

Course Topic: Panamanian Orchids - Endemism and Distribution

Prof. Yireh Concepción

The purpose of this course is to present an overview of the diversity of the tropical orchid species that are possible to find in Panama as well as their distribution, taxonomy, and their importance in our country.



UTP ENGINEERING SHORT COURSES

Course Topic: Green Energies in Panama: How can they help with technological growth

Prof. Dr. Michael Stanimirov

The technical potential exists for worldwide electricity supply based entirely on renewable energy. The course indicates and discloses on one hand the potential of the most promising technologies for tropical regions like Panama and introduces on the other hand the engineering of these technologies.

Course Topic: Understanding CO2 emissions in Panama, a carbon negative country

Prof Franchesca Gonzales

Every year, more nations are joining efforts to increase the awareness about the consequences of climate change. Countries like Panama will be directly affected if policies and actions are not taken to migrate the climate change crisis. Recent reports indicated that Panama is a carbon negative country, meaning that our country absorbs more emissions each year than they produce. In this course, we will learn about national and sectorial CO2 inventions.



UTP ENGINEERING SHORT COURSES

Additional costs (not included):

Feeding costs

The UTP has cafeterias that offer breakfast, lunch, and dinner dishes at very affordable prices. Each dish can cost between B/.2.50 or B/.3.00

In restaurants you can find dishes from B/.6.00 to B/.10.00

Mobilization costs not contemplated

- **MiBus**



MiBus

Provides bus service around the city.

- Trunk rate: 0.25 cents
- Broker fee: 1.50

Download the app to plan trips and see the next nearby bus: MiBus
MapsAndroid|IOS.

Payment method: Metrobus card or Panama Metro card

Website: Metro card / MiBus

- **Panama Metro**



Offers mobility with line 1 of the metro from the north to the south of the city.

- Fee: 0.35 cents
- Payment method: Metrobus card or Panama Metro

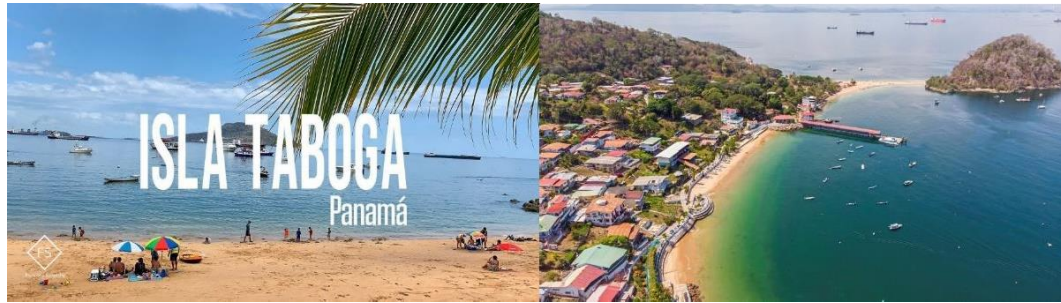
Website: Panama Subway



UTP ENGINEERING SHORT COURSES

Suggested recreational activities

- *Visit to Taboga Island:*



Taboga Express Ferry:

<https://tabogaexpress.com/es/tickets/>

Tickets for tourists (round trip): B/.24.00

Link to buy tickets:

<https://tabogaexpress.com/book-now/>

Monday - Friday		Saturday - Sunday - Holidays	
Depart Amador	Depart Taboga	Depart Amador	Depart Taboga
8:00 am	8:45 am	8:00 am	8:45 am
9:30 am	10:15 am	9:30 am	10:15 am
11:00 am	2:30 pm	11:00 am	2:30 pm
3:00 pm	4:00 pm	3:00 pm	4:00 pm
		4:30 pm	5:00 pm

Visit to the Biomuseo on the Amador Causeway:

📍 Calz. de Amador 136, Panamá



Prices

- Non-residents: B/.18.00
- Students: B/. 11.00 (show student ID)

Link to buy tickets:

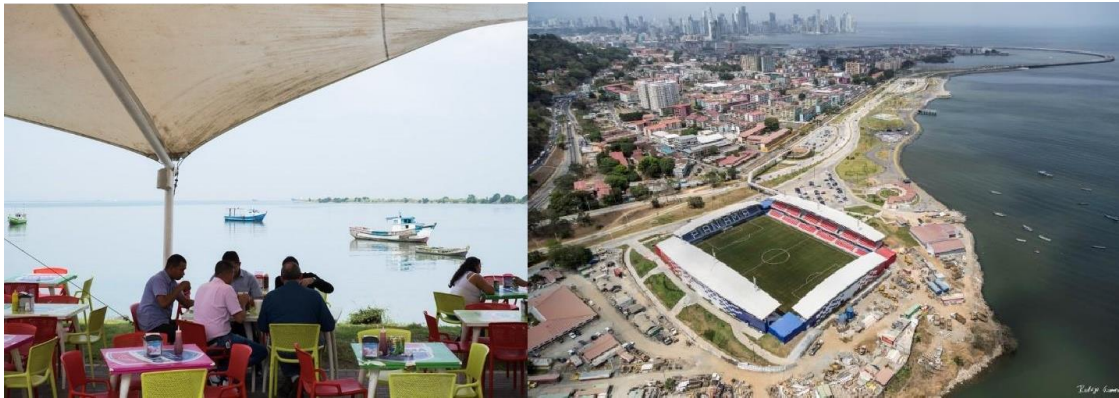
<https://boletos.biomuseopanama.org/webstore/shop/viewItems.aspx?cg=WSCG&c=GA>
C



UTP ENGINEERING SHORT COURSES

Dinner at Sabores del Chorrillo:

📍 Cinta Costera III, Estadio Maracana - Causeway - Panamá



Sale of Caribbean Afro-Caribbean food with views of the sea and near the Maracana Stadium on Cinta Costera 3.

- Delicias Zoila 6567-6666/ 6895-0202 (\$10 - \$15 per person)
- Kathia the Fish Queen 6707-5109 (\$10 approx. per person)
- Cecilia Pescao' 6618-9701 (\$6 - \$30 per person)
- La Fula Kiosk 6507-7724 / 6137-6593 (\$10 – 16 per person)

Visit to Mi Pueblito and Cerro Ancón

<https://turismo.mupa.gob.pa/complejo-turistico-mi-pueblito/>

Outdoor attraction with replicas of indigenous, Antillean and colonial buildings. Samples of Panamanian folklore are appreciated.



UTP ENGINEERING SHORT COURSES



Cost: general admission is B./ 1.00 nationals and B./ 3.00 foreigners. Children, students and retirees get free admission.



- Climbing Cerro Ancón takes about 30 minutes and from the top you can see wonderful views of Panama City and the Old Town, as well as take photos of the flag.
- This protected area has visiting hours every day from 8:00 a.m. to 4:00 p.m.
- Free entrance



UTP ENGINEERING SHORT COURSES

Walk on the Coastal Strip

- Free Access
- Visit monuments such as that of Vasco Núñez de Balboa
- Walks on the coastal strip 1, 2 and 3 with visits to the entire Panama City
- Recreational activities such as bicycling, rollerblading, or skateboarding
- Basketball court
- Near the Panama Yacht Club
- Close to shopping centers and restaurants



Visit the Port of Colon 2000

📍 P. ° Gorgas, Colón

<https://www.portcolon2000.com/>





UTP ENGINEERING SHORT COURSES

Visit the Agua Clara Locks from the Panama Canal

<https://visitcanaldepanama.com/en/points-of-interest/agua-clara-visitor-center/>



Take a tour at the Agua Clara Locks!

- 1 person: \$200 USD
- 2 people and more: \$120 USD per person.

This includes round trip transportation; hotel pick up and drop off and a bilingual guide-driver. Open from 8 a.m. to 4 p.m., tour is of approximately 4 hours.

With this tour you'll get amazing panoramic views and, hopefully, an opportunity to visit the projection room.

If you do not wish to do the tour, you can check out the Agua Clara visitor center for \$15 USD per adult.



UTP ENGINEERING SHORT COURSES

Visit Colon's Free Zone

<https://colonfreezone.com/>
www.zolicol.gob.pa



Currently the Colon Free Zone has more than 2,600 established companies which makes it the largest free zone in the American continent and the main container logistics center in Latin America.

To visit this Colon Free Zone, you'll need a tourist pass (\$5) and if you're going in with a rented car, you'll need a rented car pass per tourist (\$15). You can get both at the door but for the rented car pass you'll need the leasing contract and your passport with valid stamp.